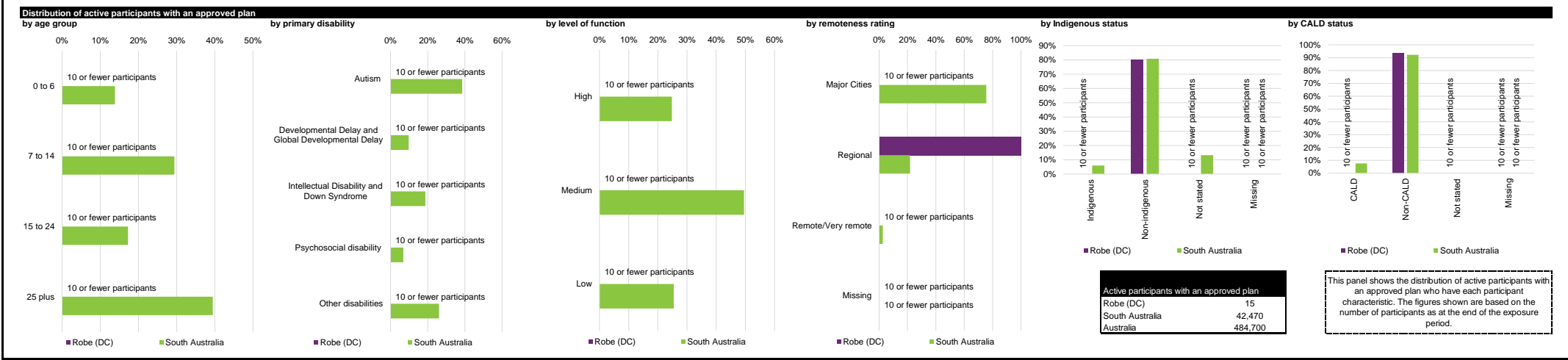
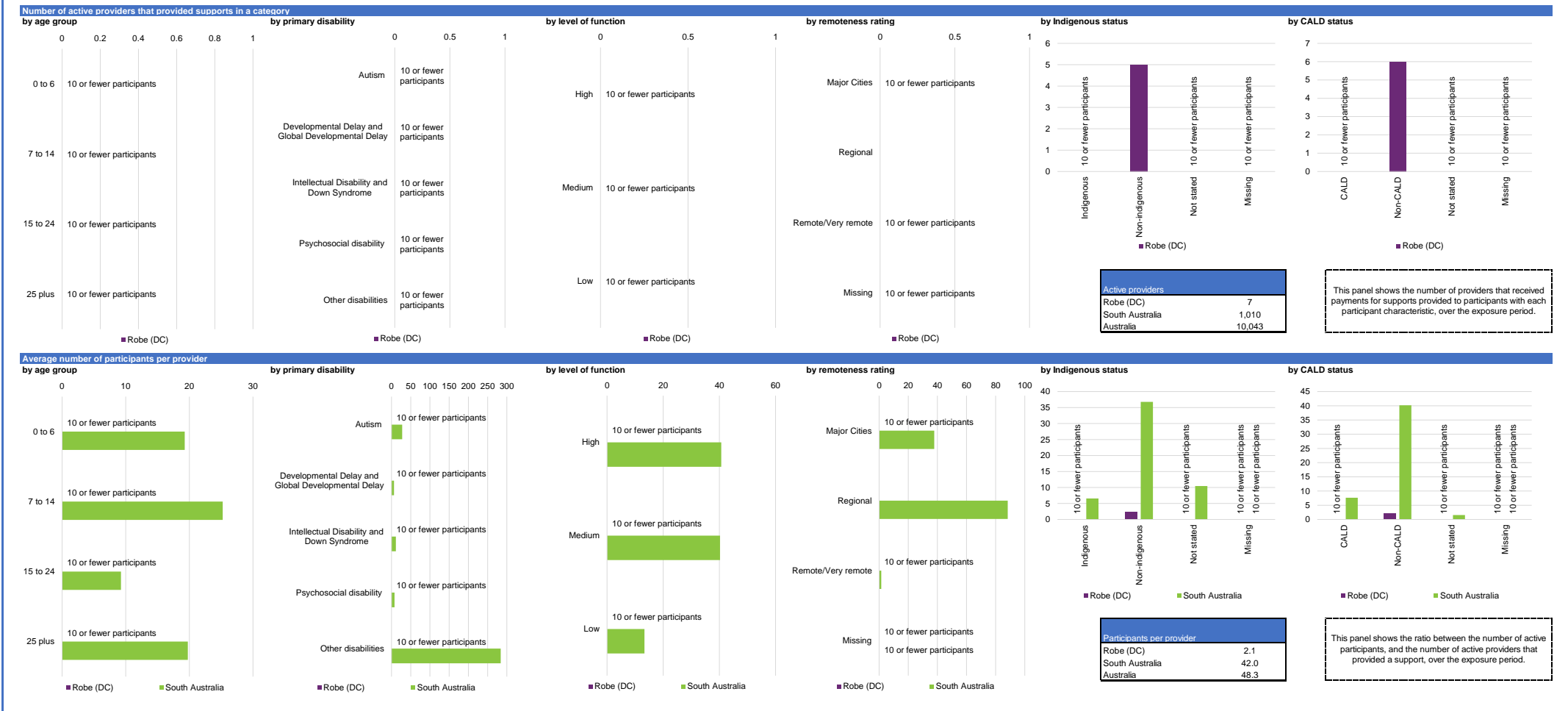


Participant profile

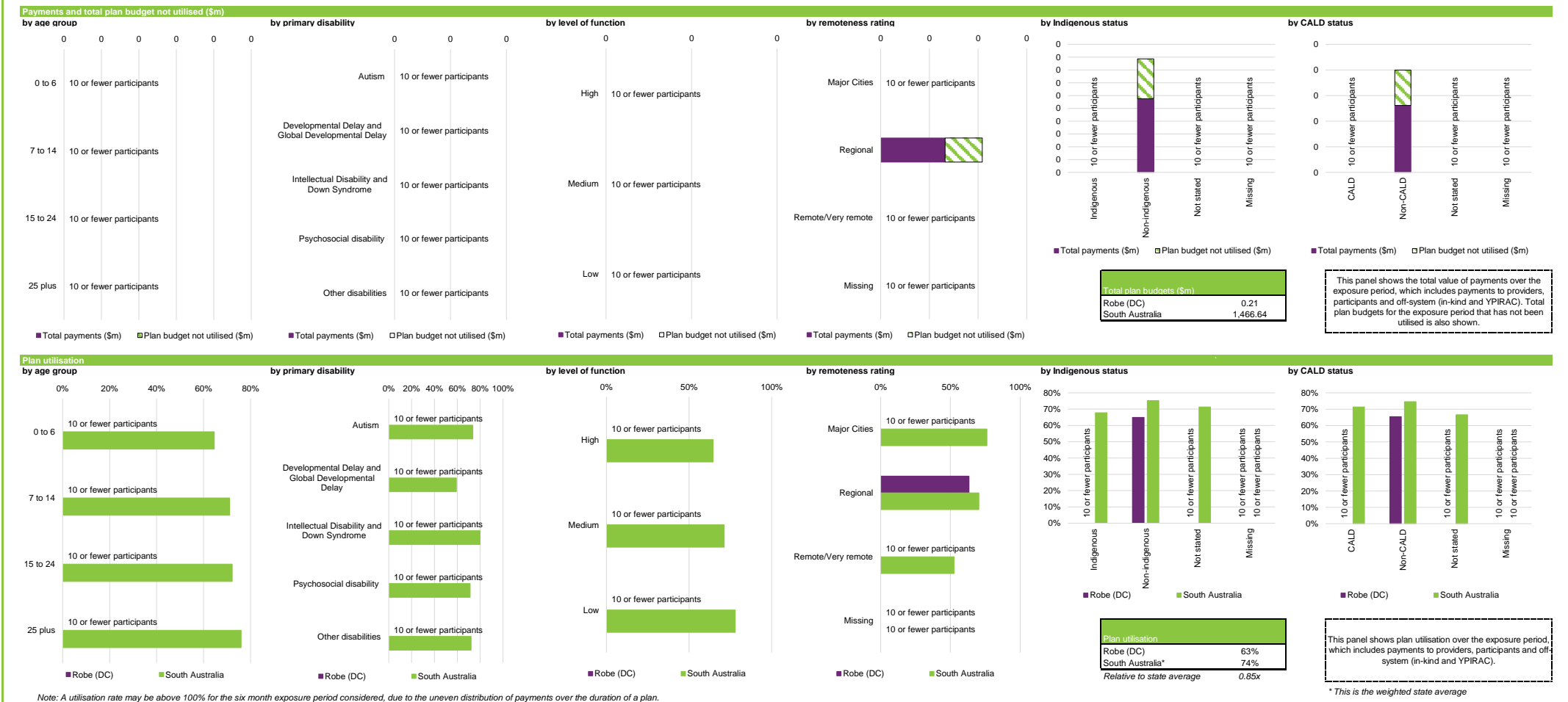
Please note that the data presented are based on only six months of data and not a full year.



Service provider indicators



Plan utilisation



Participant Category Detailed Dashboard as at 31 December 2021 (exposure period: 1 April 2021 to 30 September 2021)

LGA: Robe (DC) | Support Category: All | All Participants

Outcomes framework



Support category summary

| Support category               | Active participants with approved plans | Active providers                | Participants per provider       | Total plan budgets (\$m)        | Average plan budget (\$)        | Payments (\$m)                  | Average payments (\$)           | Utilisation                     | Outcomes indicator on choice and control | Has the NDIS helped with choice and control? |
|--------------------------------|---|---------------------------------|---------------------------------|---------------------------------|---------------------------------|---------------------------------|---------------------------------|---------------------------------|--|--|
| <b>Core</b>                    |   |                                 |                                 |                                 |                                 |                                 |                                 |                                 |  |  |
| Consumables                    | 11                                      | 2                               | 5.5                             | 0.0                             | 636                             | 0.0                             | 383                             | 60%                             | 10 or fewer participants                 | 10 or fewer participants                     |
| Daily Activities               | 10 or fewer participants                | 10 or fewer participants        | 10 or fewer participants        | 10 or fewer participants        | 10 or fewer participants        | 10 or fewer participants        | 10 or fewer participants        | 10 or fewer participants        | 10 or fewer participants                 | 10 or fewer participants                     |
| Community                      | 10 or fewer participants                | 10 or fewer participants        | 10 or fewer participants        | 10 or fewer participants        | 10 or fewer participants        | 10 or fewer participants        | 10 or fewer participants        | 10 or fewer participants        | 10 or fewer participants                 | 10 or fewer participants                     |
| Transport                      | 10 or fewer participants                | 10 or fewer participants        | 10 or fewer participants        | 10 or fewer participants        | 10 or fewer participants        | 10 or fewer participants        | 10 or fewer participants        | 10 or fewer participants        | 10 or fewer participants                 | 10 or fewer participants                     |
| <b>Core total</b>              | <b>14</b>                               | <b>3</b>                        | <b>4.7</b>                      | <b>0.1</b>                      | <b>7,450</b>                    | <b>0.1</b>                      | <b>3,709</b>                    | <b>50%</b>                      | <b>10 or fewer participants</b>          | <b>10 or fewer participants</b>              |
| <b>Capacity Building</b>       |   |                                 |                                 |                                 |                                 |                                 |                                 |                                 |  |  |
| Choice and Control             | 10 or fewer participants                | 10 or fewer participants        | 10 or fewer participants        | 10 or fewer participants        | 10 or fewer participants        | 10 or fewer participants        | 10 or fewer participants        | 10 or fewer participants        | 10 or fewer participants                 | 10 or fewer participants                     |
| Daily Activities               | 14                                      | 3                               | 4.7                             | 0.1                             | 5,060                           | 0.1                             | 3,942                           | 78%                             | 10 or fewer participants                 | 10 or fewer participants                     |
| Employment                     | 10 or fewer participants                | 10 or fewer participants        | 10 or fewer participants        | 10 or fewer participants        | 10 or fewer participants        | 10 or fewer participants        | 10 or fewer participants        | 10 or fewer participants        | 10 or fewer participants                 | 10 or fewer participants                     |
| Relationships                  | 10 or fewer participants                | 10 or fewer participants        | 10 or fewer participants        | 10 or fewer participants        | 10 or fewer participants        | 10 or fewer participants        | 10 or fewer participants        | 10 or fewer participants        | 10 or fewer participants                 | 10 or fewer participants                     |
| Social and Civic               | 10 or fewer participants                | 10 or fewer participants        | 10 or fewer participants        | 10 or fewer participants        | 10 or fewer participants        | 10 or fewer participants        | 10 or fewer participants        | 10 or fewer participants        | 10 or fewer participants                 | 10 or fewer participants                     |
| Support Coordination           | 10 or fewer participants                | 10 or fewer participants        | 10 or fewer participants        | 10 or fewer participants        | 10 or fewer participants        | 10 or fewer participants        | 10 or fewer participants        | 10 or fewer participants        | 10 or fewer participants                 | 10 or fewer participants                     |
| <b>Capacity Building total</b> | <b>14</b>                               | <b>5</b>                        | <b>2.8</b>                      | <b>0.1</b>                      | <b>6,064</b>                    | <b>0.1</b>                      | <b>4,889</b>                    | <b>80%</b>                      | <b>10 or fewer participants</b>          | <b>10 or fewer participants</b>              |
| <b>Capital</b>                 |   |                                 |                                 |                                 |                                 |                                 |                                 |                                 |  |  |
| Assistive Technology           | 10 or fewer participants                | 10 or fewer participants        | 10 or fewer participants        | 10 or fewer participants        | 10 or fewer participants        | 10 or fewer participants        | 10 or fewer participants        | 10 or fewer participants        | 10 or fewer participants                 | 10 or fewer participants                     |
| Home Modifications             | 10 or fewer participants                | 10 or fewer participants        | 10 or fewer participants        | 10 or fewer participants        | 10 or fewer participants        | 10 or fewer participants        | 10 or fewer participants        | 10 or fewer participants        | 10 or fewer participants                 | 10 or fewer participants                     |
| <b>Capital total</b>           | <b>10 or fewer participants</b>         | <b>10 or fewer participants</b> | <b>10 or fewer participants</b> | <b>10 or fewer participants</b> | <b>10 or fewer participants</b> | <b>10 or fewer participants</b> | <b>10 or fewer participants</b> | <b>10 or fewer participants</b> | <b>10 or fewer participants</b>          | <b>10 or fewer participants</b>              |
| <b>All support categories</b>  | <b>15</b>                               | <b>7</b>                        | <b>2.1</b>                      | <b>0.2</b>                      | <b>13,920</b>                   | <b>0.1</b>                      | <b>8,819</b>                    | <b>63%</b>                      | <b>10 or fewer participants</b>          | <b>10 or fewer participants</b>              |

Note: Only the major support categories are shown.

Note: The Capacity Building total includes Health and Wellbeing, Home Living and Lifelong Learning although these support categories are not shown.

Note: A utilisation rate may be above 100% for the six month exposure period considered, due to the uneven distribution of payments over the duration of a plan.

In addition, the utilisation rate for core supports may be above 100% due to lungbility which refers to the ability of participants to use their funding flexibly between different support types, albeit within certain limitation.

| Indicator definitions                        |   |
|--|---|
| Active participants with approved plans      | Number of active participants who have an approved plan and reside in the LGA / have supports relating to the support category in their plan.   |
| Active providers                             | Number of providers that received payments for supports provided to participants within the LGA / support category, over the exposure period.   |
| Participants per provider                    | Ratio between the number of active participants and the number of active providers.   |
| Total plan budgets                           | Value of supports committed in participant plans for the exposure period.   |
| Payments                                     | Value of all payments over the exposure period, including payments to providers, payments to participants and off-system payments (in-kind and Younger People In Residential Aged Care (YPIRAC)). |
| Utilisation                                  | Ratio between payments and total plan budgets.  |
| Outcomes indicator on choice and control     | Proportion of participants who reported in their most recent outcomes survey that they choose who supports them.  |
| Has the NDIS helped with choice and control? | Proportion of participants who reported in their most recent outcomes survey that the NDIS has helped with choice and control.  |